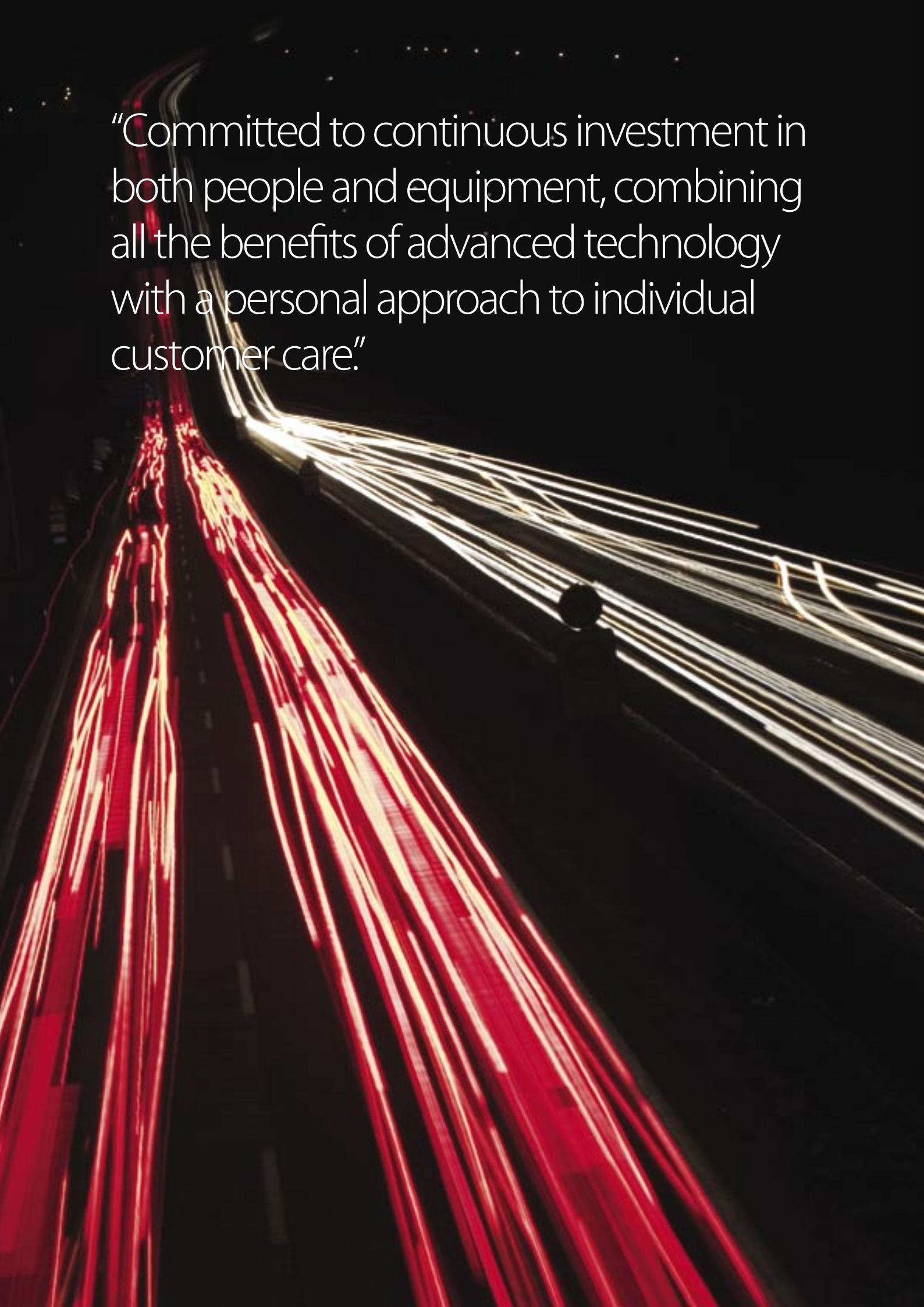


Palletine Logistics  
Logistics House  
857 Tyburn Road  
Birmingham  
B24 9NZ

Tel: 0121 386 2524  
Fax: 0121 386 2223  
Email: [info@palletinelogistics.com](mailto:info@palletinelogistics.com)  
Web: [www.palletinelogistics.com](http://www.palletinelogistics.com)

Delivering Service





"Committed to continuous investment in both people and equipment, combining all the benefits of advanced technology with a personal approach to individual customer care."

## Quality Distribution and Storage Solutions

Achieving excellence in logistics demands uncompromising levels of performance, quality, and commitment to customer service. Palletline Logistics has established a reputation for quality, flexibility and reliability in all areas of the distribution market, providing services ranging from single pallet consignments through to part and full loads.

The company has implemented a strategy of continuous investment in both people and equipment, combining all the benefits of advanced technology with an essentially personal approach to individual customer care.

Continued investment in warehousing space has also enabled Palletline Logistics to expand the range of services offered to its customer base, including storage, pick and pack, breakbulk, container destuffing palletising and distribution.

Building on these expanded facilities, Palletline Logistics remains committed to excellence, providing customers with total solutions for distribution throughout the UK and beyond.



## Quality Distribution Solutions

Our core distribution services include:-

### Pallet Distribution

- Guaranteed next day deliveries throughout the UK
- 48/72 Hour economy service
- Reverse collections

### Full and Part Loads

- Overnight and economy deliveries for dedicated loads

### Same Day Courier Service

- For urgent/critical deliveries

### European Links

- Established links on routes into Europe

Our core services are complemented by:

- Timed deliveries
- Tail lift deliveries across the fleet
- Third party collections

All services can be tailored to meet individual customer requirements.



## Secure and Reliable Storage Solutions

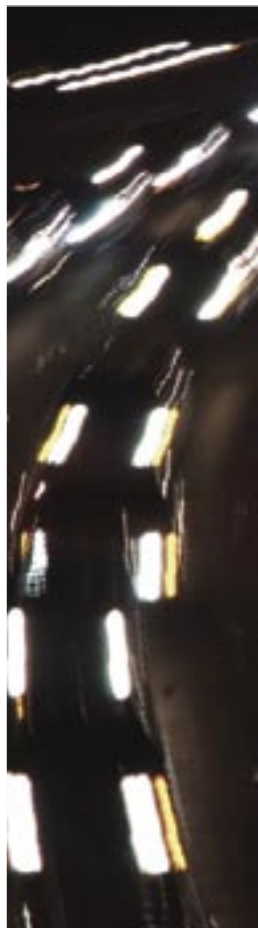
Palletline Logistics continues to invest in the infrastructure with the acquisition of top quality warehousing premises, sited in strategic geographical locations to provide flexible storage facilities for customers.

Secure, clean storage is available in modern warehouses, with all stock movement controlled by computerised warehouse management systems, offering fast stock retrieval and immediate access to accurate and up-to-date information for customers.

Alongside the expanded warehousing facilities, Palletline Logistics offers a range of added value services including:-

- Breakbulk
- Container destuffing
- Pick and pack
- Palletising
- Onward distribution

All sites benefit from CCTV/24 hour surveillance protection.

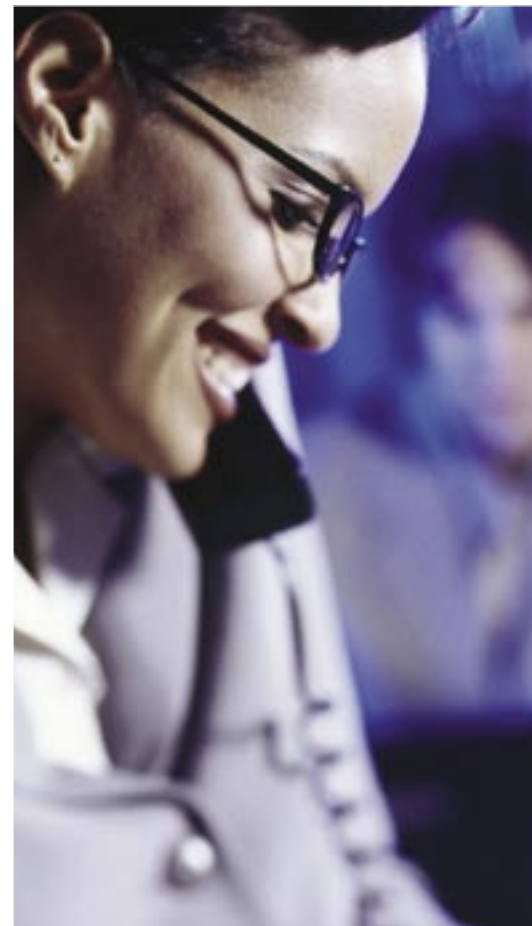


## The Gateway to UK Distribution

Operating from easily accessible locations close to the motorway network, Palletline Logistics offers a tailor-made gateway to professional and cost effective UK distribution for European companies.

Utilising the company's warehousing, breakbulk and onward delivery services, customers benefit from a total service. Whatever a customer needs, Palletline Logistics can tailor its services to meet identified requirements.

Palletline Logistics guarantees onward delivery nationwide through the Palletline pallet distribution system or on dedicated vehicles, handling consignments ranging from single pallets through to full loads.



## Committed to Communication

Palletline Logistics operates a sophisticated communications network designed to support safety, security and professionalism across all areas of the business.

The company manages a full track and trace system for all consignments, identifying and recording goods at each and every stage of their journey to provide customers with accurate and reliable information.

### Added facilities include:-

- Online booking-in system for consignments
- Track and trace for all consignments
- Online POD availability
- Direct IT links into customers' own IT systems
- Computerised stock control systems
- Vehicle satellite tracking
- Monthly KPI reports to individual customer specifications

